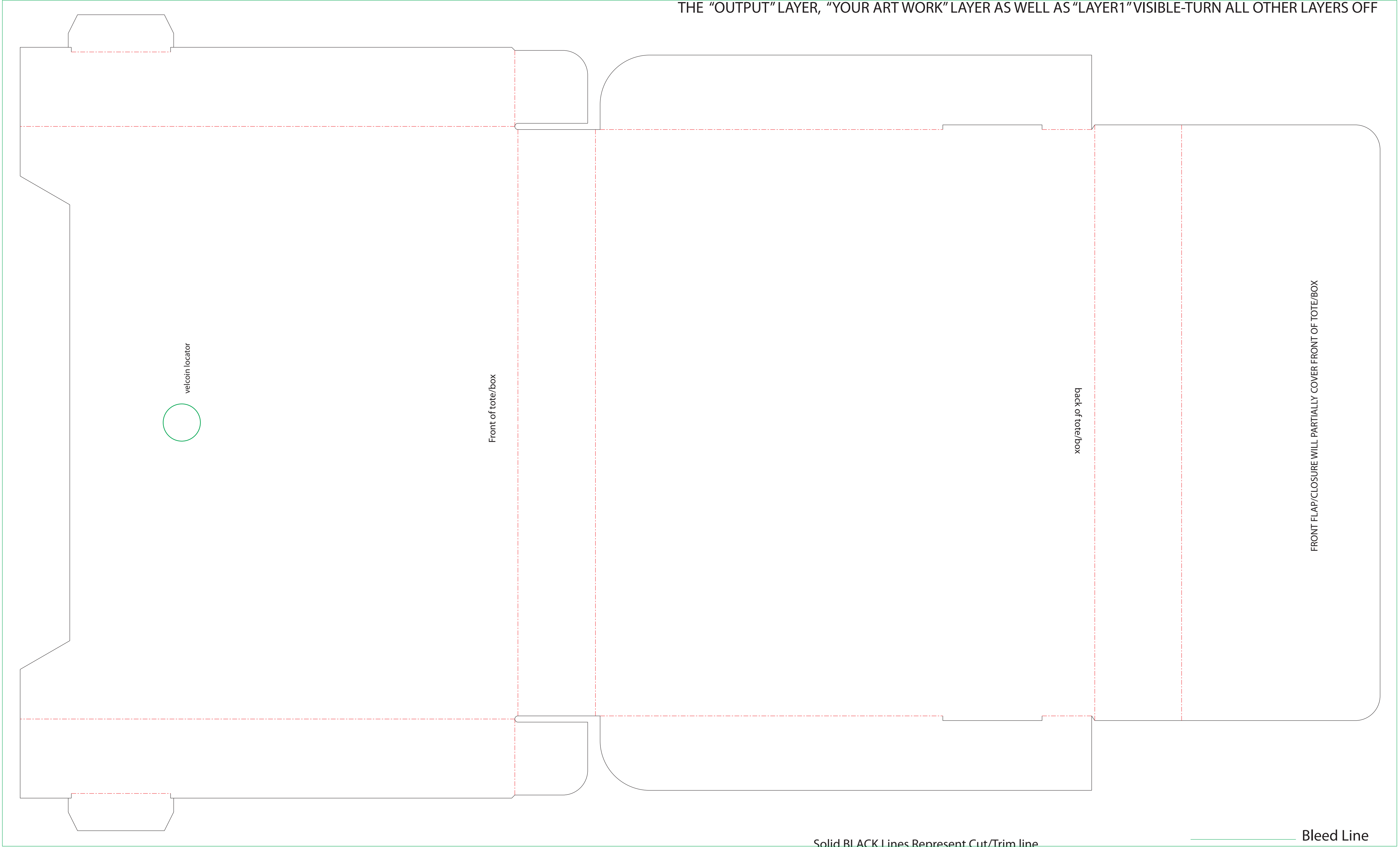


Any large Solid Floods of color must contain film grain texture aka noise

WHEN EXPORTING YOUR FINAL HIGH RESOLUTION PDF FOR UPLOAD PLEASE LEAVE THE "OUTPUT" LAYER, "YOUR ART WORK" LAYER AS WELL AS "LAYER1" VISIBLE-TURN ALL OTHER LAYERS OFF



Solid BLACK Lines Represent Cut/Trim line  
Artwork must extend 1/8th past this line to the **green** bleed line

**Bleed Line**  
**Dotted Lines** Represent Folds/Crease

