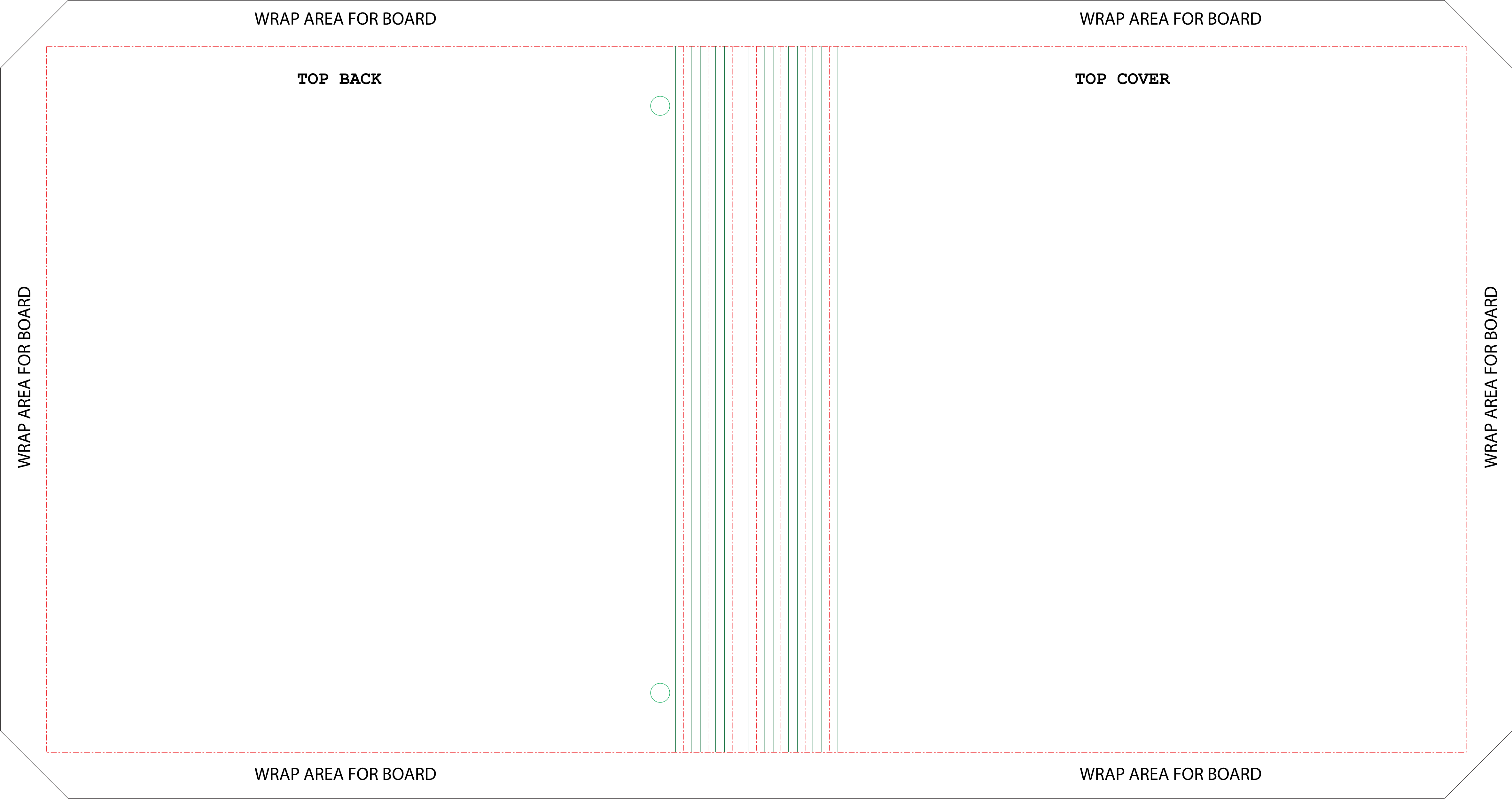


WHEN EXPORTING YOUR FINAL HIGH RESOLUTION PDF FOR UPLOAD PLEASE LEAVE THE “OUTPUT” LAYER, “YOUR ART WORK” LAYER
AS WELL AS “LAYER1” VISIBLE



DO NOT TERMINATE TEXT/GRAPHICS ON OR NEAR THE FOLD THAT WRAPS AROUND THE BOARD.
THERE IS AN APPROXIMATE 1/8TH INCH TOLERANCE AND IT IS BEST TO NOT HAVE IMAGE STOPPING IN THIS AREA. PLACE IMAGES 1/4 INCH OR MORE INSIDE THE FOLD
OR EXTEND THEM THE FULL 7/8 INCHES. FOR TEXT AND LOGOS, MAINTAIN A 1/4" SAFE AREA FROM FOLDS.

